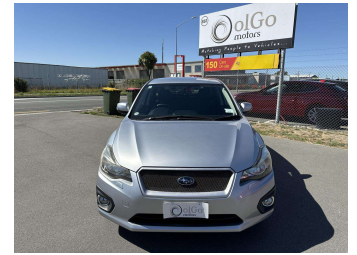


2012 Subaru Impreza 2.0i 4WD Sport EyeSight



Purchase Price **\$11,930**

Includes GST
Excludes on-road costs of \$475

Finance may be available on this vehicle. Ask one of our friendly staff for more information.

Gain peace of mind with Mechanical Breakdown Insurance. **Ask us how.**

- Top features**
- » 4WD
 - » ABS Braking
 - » Air Conditioning
 - » Alloy Wheels (Factory)
 - » Body Kit (Factory)
 - » CD Player
 - » Central Locking
 - » Chain Driven (no cam b...)
 - » Comes with new WOF
 - » Cruise Control
 - » Electric Mirrors
 - » Electric Windows
 - » New Shape
 - » Remote Locking

Body Style
5 door, Hatchback

Odometer
26,200 km

Engine
2000 cc, Petrol

Fuel Type
Petrol

Transmission
Auto, 4WD/4x4

Wheels
-

VIN
7AT0GF09X24008520

Interior
Black, Cloth

Safety



Based on 2023 UCSR rating for 12-16 models

Reg No.
-

Ext Colour
Silver

History
Ex-Overseas

Seats
5 seats

CO2 Emissions
★★★★☆
168 grams/km

Energy Economy
★★★☆☆

Annual fuel cost of \$2,820
7.2L per 100km

Cost per year is an estimate based on petrol price of \$2.80 per litre and an average distance of 14000 km. Emissions and Energy Economy figures standardised to 3P WLTP.

Stock ID: 23333



OloGo Motors Rolleston | Phone 0800 888 155 | Email
rol.sales@olgomotors.co.nz
861 Jones Rd, Rolleston 7614, New Zealand
www.olgomotors.co.nz

