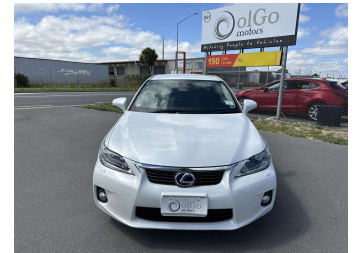


# 2011 Lexus CT 200h Ver. C



**Purchase Price** **\$18,430**

Includes GST  
Excludes on-road costs of \$475

Finance may be available on this vehicle. Ask one of our friendly staff for more information.

Gain peace of mind with Mechanical Breakdown Insurance. **Ask us how.**

- Top features**
- » ABS Braking
  - » Air Conditioning
  - » Alloy Wheels (Factory)
  - » CD Player
  - » Central Locking
  - » Chain Driven (no cam b...)
  - » Comes with new WOF
  - » Cruise Control
  - » Electric Mirrors
  - » Electric Windows
  - » Front Wheel Drive
  - » Heated Seat(s)
  - » Remote Locking
  - » Reversing Camera
  - » Smart Key

Body Style  
**5 door, Hatchback**

Odometer  
**18,600 km**

Engine  
**1800 cc, Hybrid**

Fuel Type  
**Hybrid**

Transmission  
**Auto, Front Wheel**

Wheels  
-

VIN  
**7AT0B010X2405552**

Interior  
**Black, Cloth**

Safety



Based on 2023 VSRR rating

Reg No.

-

Ext Colour  
**Pearl White**

History  
**Ex-Overseas**

Seats  
**5 seats**

CO2 Emissions  
**★★★★☆**  
**109 grams/km**

Energy Economy  
**★★★★☆☆**

**Annual fuel cost of \$1,840**  
**4.7L per 100km**

Cost per year is an estimate based on petrol price of \$2.80 per litre and an average distance of 14000 km. Emissions and Energy Economy figures standardised to 3P WLTP.

**Stock ID: 23074**



olGo Motors Rolleston | Phone 0800 888 155 | Email  
rol.sales@olgomotors.co.nz  
861 Jones Rd, Rolleston 7614, New Zealand  
www.olgomotors.co.nz

