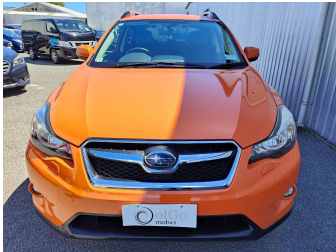
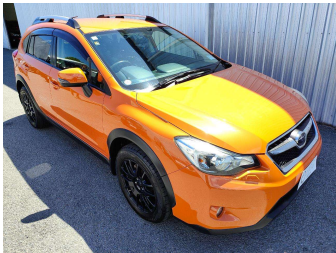


2013 Subaru XV 2.0i-L 4WD Eyesight



Purchase Price

Includes GST
Excludes on-road costs of \$475

\$13,325

Finance may be available on this vehicle. Ask one of our friendly staff for more information.

Gain peace of mind with Mechanical Breakdown Insurance. **Ask us how.**

Top features

- » 4WD
- » ABS Braking
- » Air Conditioning
- » Alloy Wheels
- » Body Kit (Factory)
- » CD Player
- » Central Locking
- » Chain Driven (no cam b...)
- » Comes with new WOF
- » Cruise Control
- » Electric Mirrors
- » Electric Windows
- » Remote Locking
- » Roof Rails

Body Style

5 door, SUV / 4x4

Odometer

102,000 km

Engine

2000 cc, Petrol

Fuel Type

Petrol

Transmission

Auto, 4WD/4x4

Wheels

-

VIN

7AT0GF1XX24052797

Interior

Black, Cloth

Safety



Based on 2023 UCSR rating for 12-16 models

Reg No.

-

Ext Colour

Orange

History

Ex-Overseas

Seats

5 seats

CO2 Emissions

★★★★☆

163 grams/km

Energy Economy

★★★☆☆

**Annual fuel cost of \$2,740
7L per 100km**

Cost per year is an estimate based on petrol price of \$2.80 per litre and an average distance of 14000 km. Emissions and Energy Economy figures standardised to 3P WLTP.

Stock ID: 23039



olGo Motors Sydenham | Phone 0800 888 585 | Email chc.sales@olgomotors.co.nz
115 Orbell St, Sydenham, Christchurch 8023, New Zealand
www.olgomotors.co.nz

