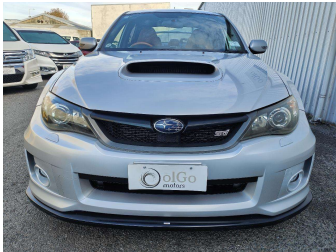
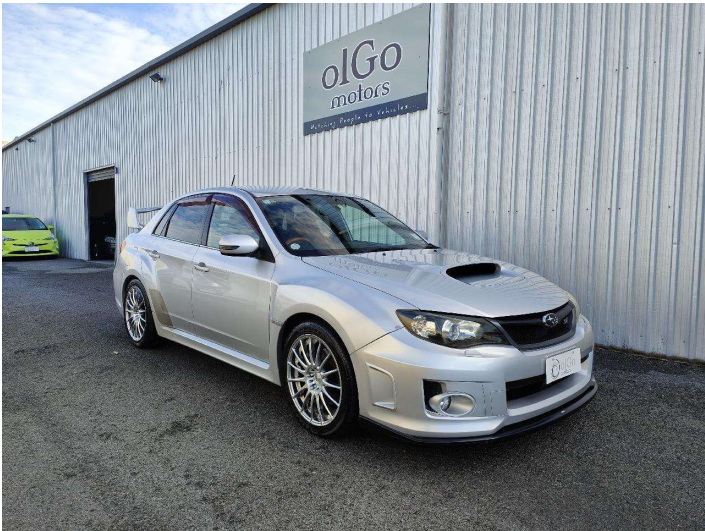


# 2010 Subaru Impreza WRX STi 2.5 4WD A-Line



## Purchase Price

Includes GST  
Excludes on-road costs of \$475

**\$24,925**

Finance may be available on this vehicle. Ask one of our friendly staff for more information.

Gain peace of mind with Mechanical Breakdown Insurance. **Ask us how.**

## Top features

- » 4WD
- » ABS Braking
- » Air Conditioning
- » Alloy Wheels
- » Body Kit (Factory)
- » CD Player
- » Central Locking
- » Comes with new WOF
- » Cruise Control
- » Electric Mirrors
- » Electric Windows
- » New Shape
- » Rear Spoiler
- » Remote Locking
- » Reversing Camera
- » Smart Key

## Body Style

**4 door, Sedan**

## Odometer

**48,000 km**

## Engine

**2500 cc, Petrol**

## Fuel Type

**Petrol**

## Transmission

**5-Speed Auto, 4WD/4x4**

## Wheels

-

## VIN

**7AT0GF09X24002126**

## Interior

**Brown, Leather**

## Safety



Based on 2023 UCSR rating for 07-11 models

## Reg No.

-

## Ext Colour

**Silver**

## History

**Ex-Overseas**

## Seats

**5 seats**

## CO2 Emissions

★☆☆☆☆

**275 grams/km**

## Energy Economy

★☆☆☆☆

**Annual fuel cost of \$4,630  
11.8L per 100km**

Cost per year is an estimate based on petrol price of \$2.80 per litre and an average distance of 14000 km. Emissions and Energy Economy figures standardised to 3P WLTP.

**Stock ID: 23835**



olGo Motors Sydenham | Phone 0800 888 585 | Email [chc.sales@olgomotors.co.nz](mailto:chc.sales@olgomotors.co.nz)  
115 Orbell St, Sydenham, Christchurch 8023, New Zealand  
[www.olgomotors.co.nz](http://www.olgomotors.co.nz)

