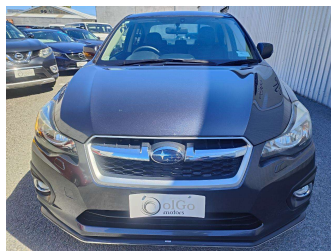
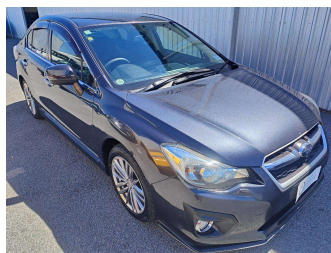


# 2012 Subaru Impreza G4 2.0i-S



**Purchase Price**  
Includes GST  
Excludes on-road costs of \$475

## \$12,450

Finance may be available on this vehicle. Ask one of our friendly staff for more information.

Gain peace of mind with Mechanical Breakdown Insurance. **Ask us how.**

- ### Top features
- » ABS Braking
  - » Air Conditioning
  - » Alloy Wheels (Factory)
  - » CD Player
  - » Central Locking
  - » Chain Driven (no cam b...)
  - » Comes with new WOF
  - » Cruise Control
  - » Electric Mirrors
  - » Electric Windows
  - » Front Wheel Drive
  - » Remote Locking

**Body Style**  
4 door, Sedan

**Odometer**  
26,000 km

**Engine**  
2000 cc, Petrol

**Fuel Type**  
Petrol


**Transmission**  
Auto, Front Wheel

**Wheels**  
-

**VIN**  
7AT0GF09X24002867

**Interior**  
Black, Half-Leather

**Safety**



Based on 2023 UCSR rating for 12-16 models

**Reg No.**  
-

**Ext Colour**  
Grey

**History**  
Ex-Overseas

**Seats**  
5 seats

**CO2 Emissions**  
★★★★☆  
153 grams/km

**Energy Economy**  
★★★★☆☆  
Annual fuel cost of \$2,590  
6.6L per 100km

Cost per year is an estimate based on petrol price of \$2.80 per litre and an average distance of 14000 km. Emissions and Energy Economy figures standardised to 3P WLTP.

**Stock ID: 23222**



olGo Motors Sydenham | Phone 0800 888 585 | Email chc.sales@olgomotors.co.nz  
115 Orbell St, Sydenham, Christchurch 8023, New Zealand  
www.olgomotors.co.nz

