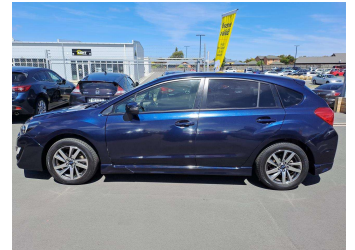


# 2016 Subaru Impreza 1.6i-S 4WD Sport



Purchase Price

**\$14,450**

Includes GST  
Excludes on-road costs of \$475

Finance may be available on this vehicle. Ask one of our friendly staff for more information.

Gain peace of mind with Mechanical Breakdown Insurance. **Ask us how.**

## Top features

- » 4WD
- » ABS Braking
- » Air Conditioning
- » Alloy Wheels (Factory)
- » Body Kit (Factory)
- » CD Player
- » Central Locking
- » Chain Driven (no cam b...
- » Comes with new WOF
- » Cruise Control
- » Electric Mirrors
- » Electric Windows
- » Facelift Model
- » Paddle Shifters
- » Remote Locking
- » Reversing Camera
- » Smart Key

Body Style

**5 door, Hatchback**

Odometer

**44,400 km**

Engine

**1600 cc, Petrol**

Fuel Type

**Petrol**

Transmission

**Auto, 4WD/4x4**

Wheels

-

VIN

**7AT0GF09X24024679**

Interior

**Black, Half-Leather**

Safety



Based on 2023 UCSR rating for 12-16 models

Reg No.

-

Ext Colour

**Blue**

History

**Ex-Overseas**

Seats

**5 seats**

CO2 Emissions

★★★★☆

**167 grams/km**

Energy Economy

★★★☆☆

**Annual fuel cost of \$2,780**

**7.1L per 100km**

Cost per year is an estimate based on petrol price of \$2.80 per litre and an average distance of 14000 km. Emissions and Energy Economy figures standardised to 3P WLTP.

**Stock ID: 23326**



olGo Motors Burnside | Phone 0800 0888 55 | Email  
burnside@olgomotors.co.nz  
BURNSIDE, 5 Lake Bryndwr Lane, Christchurch 8053, New Zealand  
www.olgomotors.co.nz

