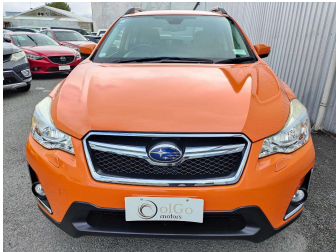


2016 Subaru XV 2.0i-L 4WD Hybrid EyeSight



Purchase Price

\$14,950

Includes GST
Excludes on-road costs of \$475

Finance may be available on this vehicle. Ask one of our friendly staff for more information.

Gain peace of mind with Mechanical Breakdown Insurance. **Ask us how.**

Top features

- » 4WD
- » ABS Braking
- » Air Conditioning
- » Alloy Wheels (Factory)
- » CD Player
- » Central Locking
- » Chain Driven (no cam b...
- » Comes with new WOF
- » Cruise Control
- » Electric Mirrors
- » Electric Windows
- » Remote Locking
- » Roof Rails
- » Smart Key

Body Style

5 door, Hatchback

Odometer

131,000 km

Engine

2000 cc, Hybrid

Fuel Type

Hybrid

Transmission

Auto, 4WD/4x4

Wheels

-

VIN

7AT0GF1XX24030827

Interior

Black & Grey, Cloth

Safety



Based on 2023 UCSR rating for 12-16 models

Reg No.

-

Ext Colour

Orange

History

Ex-Overseas

Seats

5 seats

CO2 Emissions

★★★★☆

135 grams/km

Energy Economy

★★★★☆☆

Annual fuel cost of \$2,270

5.8L per 100km

Cost per year is an estimate based on petrol price of \$2.80 per litre and an average distance of 14000 km. Emissions and Energy Economy figures standardised to 3P WLTP.

Stock ID: 23383



olGo Motors Sydenham | Phone 0800 888 585 | Email chc.sales@olgomotors.co.nz
115 Orbell St, Sydenham, Christchurch 8023, New Zealand
www.olgomotors.co.nz

