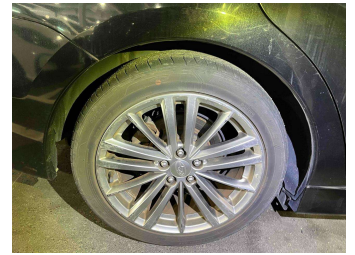


2012 Subaru Impreza G4 2.0i



Purchase Price

\$11,950

Includes GST
Excludes on-road costs of \$475

Finance may be available on this vehicle. Ask one of our friendly staff for more information.

Gain peace of mind with Mechanical Breakdown Insurance. **Ask us how.**

Top features

- » ABS Braking
- » Air Conditioning
- » Alloy Wheels (Factory)
- » Body Kit (Factory)
- » CD Player
- » Central Locking
- » Chain Driven (no cam b...)
- » Comes with new WOF
- » Cruise Control
- » Electric Mirrors
- » Electric Windows
- » Front Wheel Drive
- » New Shape
- » Paddle Shifters
- » Remote Locking
- » Reversing Camera
- » Smart Key

Body Style

4 door, Sedan

Odometer

44,000 km

Engine

2000 cc, Petrol

Fuel Type

Petrol

Transmission

Auto, Front Wheel

Wheels

-

VIN

-

Interior

Black, Half-Leather

Safety



Based on 2023 UCSR rating for 12-16 models

Reg No.

-

Ext Colour

Black

History

Ex-Overseas

Seats

5 seats

CO2 Emissions

★★★★☆

153 grams/km

Energy Economy

★★★★☆☆

Annual fuel cost of \$2,590

6.6L per 100km

Cost per year is an estimate based on petrol price of \$2.80 per litre and an average distance of 14000 km. Emissions and Energy Economy figures standardised to 3P WLTP.

Stock ID: 23935



olGo Motors Burnside | Phone 0800 0888 55 | Email
burnside@olgomotors.co.nz
BURNSIDE, 5 Lake Bryndwr Lane, Christchurch 8053, New Zealand
www.olgomotors.co.nz

