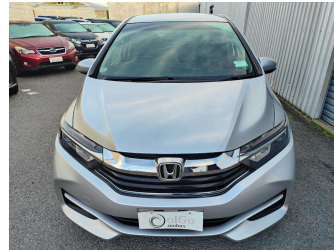


2015 Honda Shuttle 1.5 Hybrid



Purchase Price

\$11,350

Includes GST
Excludes on-road costs of \$475

Finance may be available on this vehicle. Ask one of our friendly staff for more information.

Gain peace of mind with Mechanical Breakdown Insurance. **Ask us how.**

Top features

- » ABS Braking
- » Air Conditioning
- » CD Player
- » Central Locking
- » Chain Driven (no cam b...
- » Comes with new WOF
- » Electric Mirrors
- » Electric Windows
- » Front Wheel Drive
- » New Shape
- » Remote Locking
- » Smart Key

Body Style

5 door, Station Wagon

Odometer

119,000 km

Engine

1500 cc, Hybrid

Fuel Type

Hybrid

Transmission

Auto, Front Wheel

Wheels

-

VIN

7AT08G1XX23014443

Interior

Black, Cloth

Safety



Based on 2023 VSRR rating

Reg No.

-

Ext Colour

Silver

History

Ex-Overseas

Seats

5 seats

CO2 Emissions

★★★★☆

91 grams/km

Energy Economy

★★★★☆☆

**Annual fuel cost of \$1,490
3.8L per 100km**

Cost per year is an estimate based on petrol price of \$2.80 per litre and an average distance of 14000 km. Emissions and Energy Economy figures standardised to 3P WLTP.

Stock ID: 21548



olGo Motors Sydenham | Phone 0800 888 585 | Email
chc.sales@olgomotors.co.nz
115 Orbell St, Sydenham, Christchurch 8023, New Zealand
www.olgomotors.co.nz

