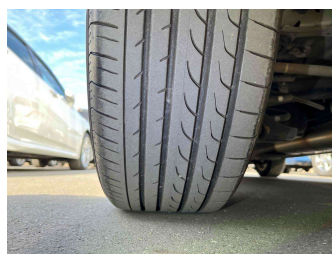
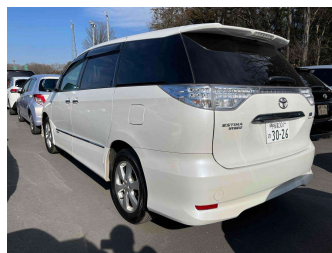


# 2009 Toyota Estima 2.4 X 4WD Hybrid



**Purchase Price** **\$13,950**

Includes GST  
Excludes on-road costs of \$475

Finance may be available on this vehicle. Ask one of our friendly staff for more information.

Gain peace of mind with Mechanical Breakdown Insurance. **Ask us how.**

- Top features**
- » 4WD
  - » ABS Braking
  - » Air Conditioning
  - » Alloy Wheels (Factory)
  - » CD Player
  - » Central Locking
  - » Chain Driven (no cam b...)
  - » Comes with new WOF
  - » Cruise Control
  - » Electric Mirrors
  - » Electric Windows
  - » Power Door(s)
  - » Rear Spoiler
  - » Remote Locking
  - » Reversing Camera
  - » Smart Key

Body Style  
**5 door, People Mover**

Odometer  
**118,800 km**

Engine  
**2400 cc, Hybrid**

Fuel Type  
**Hybrid**

Transmission  
**Auto, 4WD/4x4**

Wheels  
-

VIN  
-

Interior  
**Beige, Cloth**

Safety



Based on 2023 UCSR rating for 06-19 models

Reg No.

-

Ext Colour  
**Pearl White**

History  
**Ex-Overseas**

Seats  
**7 seats**

CO2 Emissions  
**★★★★☆**  
**150 grams/km**

Energy Economy  
**★★★★☆☆**

**Annual fuel cost of \$2,550**  
**6.5L per 100km**

Cost per year is an estimate based on petrol price of \$2.80 per litre and an average distance of 14000 km. Emissions and Energy Economy figures standardised to 3P WLTP.

**Stock ID: 23792**



olGo Motors Burnside | Phone 0800 0888 55 | Email burnside@olgomotors.co.nz  
BURNSIDE, 5 Lake Bryndwr Lane, Christchurch 8053, New Zealand  
www.olgomotors.co.nz

