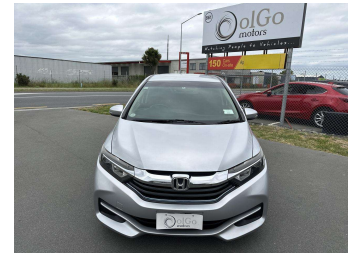


# 2016 Honda Shuttle 1.5 Hybrid



Purchase Price

**\$12,930**

Includes GST  
Excludes on-road costs of \$350

Finance may be available on this vehicle. Ask one of our friendly staff for more information.

Gain peace of mind with Mechanical Breakdown Insurance. **Ask us how.**

## Top features

- » ABS Braking
- » Air Conditioning
- » CD Player
- » Central Locking
- » Chain Driven (no cam b...)
- » Comes with new WOF
- » Electric Mirrors
- » Electric Windows
- » Front Wheel Drive
- » New Shape
- » Remote Locking
- » Reversing Camera
- » Smart Key

Body Style

**5 door, Station Wagon**

Odometer

**113,400 km**

Engine

**1500 cc, Hybrid**

Fuel Type

**Hybrid**

Transmission

**Auto, Front Wheel**

Wheels

-

VIN

**7AT08G1XX23018528**

Interior

**Black, Cloth**

Safety



Based on 2023 VSRR rating

Reg No.

**QHQ19**

Ext Colour

**Silver**

History

**Ex-Overseas**

Seats

**5 seats**

CO2 Emissions

★★★★☆

**91 grams/km**

Energy Economy

★★★★☆

**Annual fuel cost of \$1,490**

**3.8L per 100km**

Cost per year is an estimate based on petrol price of \$2.80 per litre and an average distance of 14000 km. Emissions and Energy Economy figures standardised to 3P WLTP.

**Stock ID: 22361**



OlGo Motors Rolleston | Phone 0800 888 155 | Email  
rol.sales@olgomotors.co.nz  
861 Jones Rd, Rolleston 7614, New Zealand  
www.olgomotors.co.nz



★★★★★  
4.54 | 1524 reviews