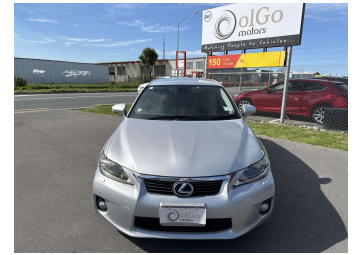


2011 Lexus CT 200h Ver. L



Purchase Price **\$15,930**

Includes GST
Excludes on-road costs of \$475

Finance may be available on this vehicle. Ask one of our friendly staff for more information.

Gain peace of mind with Mechanical Breakdown Insurance. **Ask us how.**

- Top features**
- » ABS Braking
 - » Air Conditioning
 - » Alloy Wheels (Factory)
 - » Body Kit (Factory)
 - » CD Player
 - » Central Locking
 - » Chain Driven (no cam b...)
 - » Comes with new WOF
 - » Cruise Control
 - » Electric Mirrors
 - » Electric Windows
 - » Front Wheel Drive
 - » Heated Seat(s)
 - » Power Front Seat(s)
 - » Remote Locking
 - » Reversing Camera
 - » Smart Key

Body Style
5 door, Hatchback

Odometer
76,900 km

Engine
1800 cc, Hybrid

Fuel Type
Hybrid

Transmission
Auto, Front Wheel

Wheels
-

VIN
7AT0B010X23004882

Interior
Black, Leather

Safety



Based on 2023 VSRR rating

Reg No.

-

Ext Colour
Silver

History
Ex-Overseas

Seats
5 seats

CO2 Emissions
★★★★☆
109 grams/km

Energy Economy
★★★★☆☆

Annual fuel cost of \$1,840
4.7L per 100km

Cost per year is an estimate based on petrol price of \$2.80 per litre and an average distance of 14000 km. Emissions and Energy Economy figures standardised to 3P WLTP.

Stock ID: 22716



OlGo Motors Rolleston | Phone 0800 888 155 | Email
rol.sales@olgomotors.co.nz
861 Jones Rd, Rolleston 7614, New Zealand
www.olgomotors.co.nz



★★★★★
4.53 | 1523 reviews